

FALL 2020

PAPER SHREDDING EVENTS

SUNDAY
OCTOBER 18
and
SUNDAY
NOVEMBER 15

Both events are from 9 AM until 1 PM*
RAIN OR SHINE

**Burlington County
Resource Recovery Complex** (Landfill)
22000 Burlington-Columbus Road
Florence, NJ 08518 (Exit 52A off I-295)

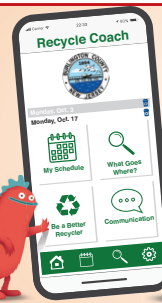
***EVENTS MAY END PRIOR TO 1PM IF
SHREDDING TRUCKS REACH CAPACITY.**

Many of us, cooped up due to Covid-19, sorted old files for confidential papers to shred.

We are here to help with two fall events.

*Please follow our guidelines,
so that we may safely offer this free service.*

*– Felicia Hopson,
Burlington County Board
Director*



**Find Paper Shredding
dates and more!**



Download the **FREE** app today!



- ✓ You must remain in your car; masks will be required at all times.
- ✓ Paper must be placed in trunk, cargo area or truck bed, easily accessible to staff, who will remove it from the vehicle.
- ✓ Limit of 4 bags/boxes of unshredded paper weighing no more than 10 lbs. each. Shredded paper is also accepted.
- ✓ Confidential files only; no magazines or junk mail.
- ✓ No businesses or non-profits.

BURLINGTON COUNTY RESIDENTS ONLY. IDENTIFICATION REQUIRED.

Questions? Call **(609) 499-1001 ext. 271 or 266**
or email **recycle@co.burlington.nj.us**